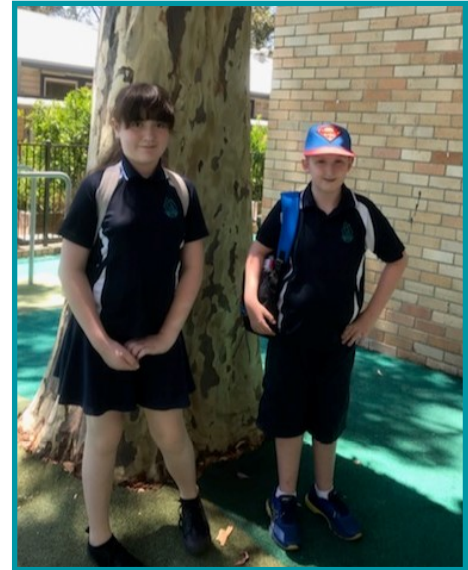




Respect, Responsibility, Personal Best



## K-6H & K-6G TRANSITION AT HENRY KENDALL



### COMING EVENTS

#### TERM 4

#### WEEK 6

**Wednesday 20 November**

View Start Graduation  
View Start BBQ  
Obstacool (new date)  
P&C Disco

**Thursday 21 November**

Stage 1 Rumbalara Excursion  
Stage 3 STEM day  
Stage 3 GATS Day

**Friday 22 November**

Star FM Visit  
Infants Assembly

#### WEEK 7

**Wednesday 27 November**

Stage 3 Surf Fun Day

**Thursday 28 November**

Scripture Service  
Volunteers Morning Tea

**Friday 29 November**

Primary Assembly

#### WEEK 8

**Tuesday 3 December**

Lisarow High Orientation Day  
Narara Valley High  
Information Night

**Thursday 5 December**

Sex Education Sessions  
Stage 3

**Friday 6 December**

Whole School Presentation  
Day Practice  
P&C Carols

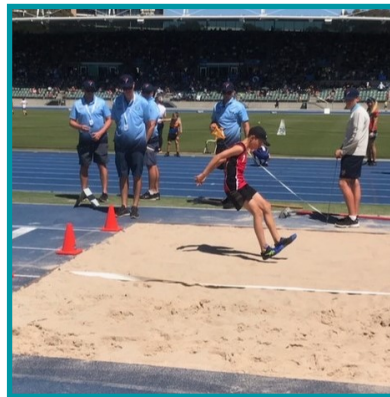
#### Week 9

**Tuesday 10 December**

P&C Meeting

**Friday 13 December**

Presentation Day



## STATE ATHLETICS ETHAN K-6G 8th in Long Jump



NSW DEPARTMENT OF EDUCATION



## PRINCIPAL'S MESSAGE

### Air Quality

Thankyou to the community for your support and understanding during the recent catastrophic fire ratings. As weather conditions change we continually monitor the air quality and provide appropriate adjustments for students to ensure their wellbeing is supported.

### Stage 1 Rumbalara Excursion

A decision has been made to cancel the Stage 1 Excursion planned for this Thursday. All parents and carers have received a note. This decision has been made due to upcoming weather forecasts. We appreciate parents support in ensuring student safety.

### 2020 Planning

The school executive team are currently considering staffing and class models for 2020. Forming classes in schools is a complex process based on Department of Education policy and guidelines. Decisions regarding class placement is taken seriously with a variety of factors considered when placing students. I am happy for parents to outline aspects of their child's learning and development that may need special consideration when forming class compositions. Please note requests for specific teachers will not be met. Although any discussions regarding class compositions will be considered we ask parents to support children to create a supportive and resilient learning environment.

### Family Occupation and Education Index (FOEI)

The socio-economic background equity loading for the Resource Allocation Model (RAM) is based on a combination of student and school needs using the Family Occupation and Education Index (FOEI). FOEI 2020 will be based on students' parental education and occupation. This information will be extracted from ERN at the start of Term 2, 2020. Each year there has been a significant improvement in the way schools work with their parent community to ensure that this data is as complete and accurate as possible. It is critical for determining the distribution of funding to schools for the 2020 socio-economic background equity loading.

Parents are asked to make contact with the office if any details contained in their enrolment form needs to change.

### Attendance at School

If your child misses an average of nine days per term (that's less than one day a week) during their primary school years, they would have missed a whole year of learning by the time they reach Year 7. If they miss 10 minutes a day that equals 8 hours 33 minutes a term or nearly 8 days of learning in a year. **It is cool to be in school on time.**

### Presentation Day

Presentation Day will be held on Friday, 13th December 2019 - 9:15am for a 9:30am start. We look forward to celebrating the many successes we have had this year at Valley View Public School.

*Have a great week at our great public school.*  
**Peter Graham**  
**Acting Principal**



## THIS WEEK IN PBL!

### Leaving School in the Afternoons

When leaving school in the afternoon we need to keep ourselves safe and be respectful to our community members.

#### Discussion:

Pose Question: When leaving school in the afternoon how might people get home?

- ◆ Discuss modes of transport, or afterschool activities
- ◆ Identify other possible unsafe situations
- ◆ Identify interactions with community members.

#### Practise:

- ◆ Practice look right, look left, look right again
- ◆ Using the crossing
- ◆ Walking your bike down the hill and walking it across roads.
- ◆ Getting off at bus stops and waiting for the bus to leave



## FLYING THE AUSTRALIAN FLAG

### Flag Duty – Week 6

Year 6 students on flag duty for Week 6 Brianna and Latisha

Thank you to the students on duty in Week 5



## OUR SCHOOL GATES

Parents are reminded that they should not drive onto school grounds unless you are picking up a sick child. If you do drive in, please remember that the gates need to be kept closed. The gates are not locked, they are kept shut for safety reasons. You **MUST** open and close them when entering and open and close them again when you leave.

## STAGE 3 EXCURSION TOOWOON BAY BEACH

Our Stage 3 Excursion to Toowoona Bay Beach on 27th November is fast approaching. Please remember that notes and money **must be in by 20th November 2019**. We cannot accept any payments or notes after this date due to the lifesavers needing to organise the student teacher ratio. So don't be disappointed, payments can be paid to the office or through our parent online payment system which you can access through the school website.

**Tara Turner**  
Coordinator



# School Community Charter

 **Collaborative. Respectful. Communication.**

The following School Community Charter outlines the responsibilities of parents, carers, educators and school staff in NSW public schools to ensure our learning environments are collaborative, supportive and cohesive.

We treat each other with **respect**

## What our schools provide

NSW public schools work to create positive environments for students, staff and the entire school community that support student learning. We strive to ensure that every student is known, valued and cared for.

The best education happens when parents and schools work together.

The School Community Charter aligns with the NSW Department of Education Strategic Plan 2018 – 2022.



## Positive environments

It is important that our NSW public schools are positive environments and that parents and carers are kept informed of students' progress and school announcements.

Parents and carers can expect:

- to be welcomed into our schools to work in partnership to promote student learning.
- communication from school staff will be timely, polite and informative.
- professional relationships with school staff are based on transparency, honesty and mutual respect.
- to be treated fairly. Tolerance and understanding are promoted as we respect diversity.

We **prioritise** the wellbeing of all students and staff

**Unsafe behaviour** is not acceptable in our schools

We work **together** with the school

**Ensuring respectful learning environments for all members of NSW Public Schools communities.**

© NSW Department of Education





We create  
**collaborative**  
learning  
environments

We  
all play  
**a part**

We work  
**in partnership**  
to promote  
student  
learning

### Communicating with our schools

Our staff will find a time to talk to you when they can give you their full attention. Please remember that while our staff are in class or dealing with other matters, they may not be available to answer your questions immediately.

Our schools and communities will make sure that written communication is appropriate, fair and easy to read. We encourage you to use email and social media appropriately to connect with your school and stay up-to-date with up-coming events in the school community.

Our guide for parents, carers and students provides useful information about the complaints process: [education.nsw.gov.au/about-us/rights-and-accountability/complaints-compliments-and-suggestions/guide-for-parents-carers-and-students](http://education.nsw.gov.au/about-us/rights-and-accountability/complaints-compliments-and-suggestions/guide-for-parents-carers-and-students)

### Respectful communication is a right

In all workplaces people have the right to feel respected. Unacceptable and offensive behaviour has no place in our school communities.

To ensure the wellbeing of students, staff and the community in our schools, steps will be taken to address unacceptable behaviour. This may include restricting contact with the school community or, in more serious cases, referral to NSW Police.



### Unacceptable behaviour may include but is not limited to:

- Aggressive or intimidating actions, such as violence, threatening gestures or physical proximity.
- Aggressive or intimidating language, including the use of obscenities, making sexist, racist or derogatory comments or using a rude tone.
- Treating members of the school community differently due to aspects such as their religion or disability.
- Inappropriate and time wasting communication.



**Collaborative.**  
**Respectful.**  
**Communication.**

**School Community Charter**

education.nsw.gov.au

# OFFICE NEWS

## NEWSLETTERS IN 2020

As of Term 1 next year, newsletters will be done on a fortnightly basis.

The first newsletter will come out in Week 2 on Tuesday 4th February. Newsletters will be published as usual on the school website and the school app.

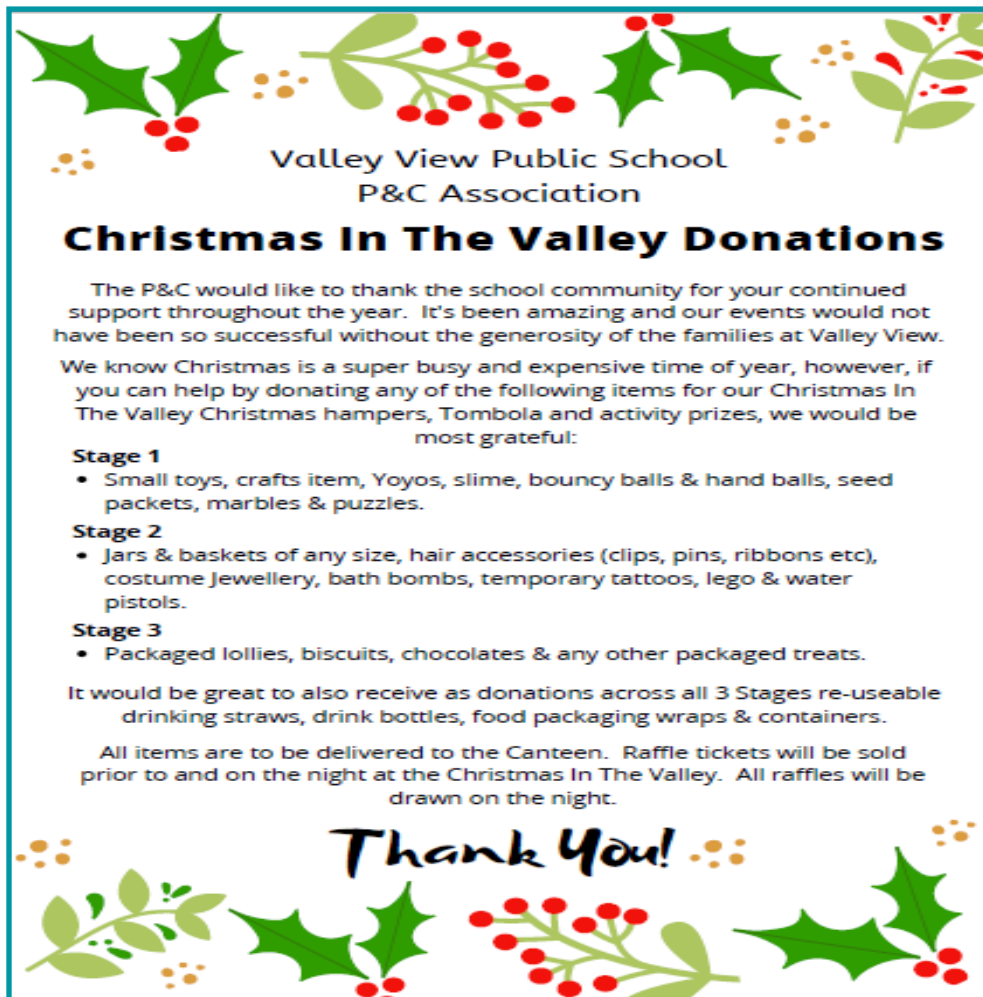
**Nicole Dorratt**  
School Administration Manager

### IMPORTANT DATES 2019

**Friday 13 December**  
Presentation Day

**Tuesday 17 December**  
Year 6 Farewell—Gosford Golf Club

| 2019      |    |    |    |    |    |    |          |    |    |    |    |    |    |          |    |    |    |    |    |    |          |    |    |    |    |    |    |
|-----------|----|----|----|----|----|----|----------|----|----|----|----|----|----|----------|----|----|----|----|----|----|----------|----|----|----|----|----|----|
| January   |    |    |    |    |    |    | February |    |    |    |    |    |    | March    |    |    |    |    |    |    | April    |    |    |    |    |    |    |
| S         | M  | T  | W  | T  | F  | S  | S        | M  | T  | W  | T  | F  | S  | S        | M  | T  | W  | T  | F  | S  | S        | M  | T  | W  | T  | F  | S  |
| 1         | 2  | 3  | 4  | 5  |    |    | 1        | 2  | 3  | 4  | 5  | 6  | 1  | 2        | 3  | 4  | 5  | 6  | 7  | 1  | 2        | 3  | 4  | 5  | 6  | 7  |    |
| 8         | 9  | 10 | 11 | 12 | 13 | 14 | 8        | 9  | 10 | 11 | 12 | 13 | 14 | 8        | 9  | 10 | 11 | 12 | 13 | 14 | 8        | 9  | 10 | 11 | 12 | 13 | 14 |
| 15        | 16 | 17 | 18 | 19 | 20 | 21 | 15       | 16 | 17 | 18 | 19 | 20 | 21 | 15       | 16 | 17 | 18 | 19 | 20 | 21 | 15       | 16 | 17 | 18 | 19 | 20 | 21 |
| 22        | 23 | 24 | 25 | 26 | 27 | 28 | 22       | 23 | 24 | 25 | 26 | 27 | 28 | 22       | 23 | 24 | 25 | 26 | 27 | 28 | 22       | 23 | 24 | 25 | 26 | 27 | 28 |
| 29        | 30 | 31 |    |    |    |    | 29       | 30 | 31 |    |    |    |    | 29       | 30 | 31 |    |    |    |    | 29       | 30 | 31 |    |    |    |    |
| May       |    |    |    |    |    |    | June     |    |    |    |    |    |    | July     |    |    |    |    |    |    | August   |    |    |    |    |    |    |
| S         | M  | T  | W  | T  | F  | S  | S        | M  | T  | W  | T  | F  | S  | S        | M  | T  | W  | T  | F  | S  | S        | M  | T  | W  | T  | F  | S  |
| 1         | 2  | 3  | 4  |    |    |    | 1        | 2  | 3  | 4  | 5  | 6  | 1  | 2        | 3  | 4  | 5  | 6  | 7  | 1  | 2        | 3  | 4  | 5  | 6  | 7  |    |
| 8         | 9  | 10 | 11 | 12 | 13 | 14 | 8        | 9  | 10 | 11 | 12 | 13 | 14 | 8        | 9  | 10 | 11 | 12 | 13 | 14 | 8        | 9  | 10 | 11 | 12 | 13 | 14 |
| 15        | 16 | 17 | 18 | 19 | 20 | 21 | 15       | 16 | 17 | 18 | 19 | 20 | 21 | 15       | 16 | 17 | 18 | 19 | 20 | 21 | 15       | 16 | 17 | 18 | 19 | 20 | 21 |
| 22        | 23 | 24 | 25 | 26 | 27 | 28 | 22       | 23 | 24 | 25 | 26 | 27 | 28 | 22       | 23 | 24 | 25 | 26 | 27 | 28 | 22       | 23 | 24 | 25 | 26 | 27 | 28 |
| 29        | 30 | 31 |    |    |    |    | 29       | 30 | 31 |    |    |    |    | 29       | 30 | 31 |    |    |    |    | 29       | 30 | 31 |    |    |    |    |
| September |    |    |    |    |    |    | October  |    |    |    |    |    |    | November |    |    |    |    |    |    | December |    |    |    |    |    |    |
| S         | M  | T  | W  | T  | F  | S  | S        | M  | T  | W  | T  | F  | S  | S        | M  | T  | W  | T  | F  | S  | S        | M  | T  | W  | T  | F  | S  |
| 1         | 2  | 3  | 4  | 5  | 6  | 7  | 1        | 2  | 3  | 4  | 5  | 6  | 1  | 2        | 3  | 4  | 5  | 6  | 7  | 1  | 2        | 3  | 4  | 5  | 6  | 7  |    |
| 8         | 9  | 10 | 11 | 12 | 13 | 14 | 8        | 9  | 10 | 11 | 12 | 13 | 14 | 8        | 9  | 10 | 11 | 12 | 13 | 14 | 8        | 9  | 10 | 11 | 12 | 13 | 14 |
| 15        | 16 | 17 | 18 | 19 | 20 | 21 | 15       | 16 | 17 | 18 | 19 | 20 | 21 | 15       | 16 | 17 | 18 | 19 | 20 | 21 | 15       | 16 | 17 | 18 | 19 | 20 | 21 |
| 22        | 23 | 24 | 25 | 26 | 27 | 28 | 22       | 23 | 24 | 25 | 26 | 27 | 28 | 22       | 23 | 24 | 25 | 26 | 27 | 28 | 22       | 23 | 24 | 25 | 26 | 27 | 28 |
| 29        | 30 |    |    |    |    |    | 29       | 30 | 31 |    |    |    |    | 29       | 30 | 31 |    |    |    |    | 29       | 30 | 31 |    |    |    |    |



Valley View Public School  
P&C Association

### Christmas In The Valley Donations

The P&C would like to thank the school community for your continued support throughout the year. It's been amazing and our events would not have been so successful without the generosity of the families at Valley View.

We know Christmas is a super busy and expensive time of year, however, if you can help by donating any of the following items for our Christmas In The Valley Christmas hampers, Tombola and activity prizes, we would be most grateful:

- Stage 1**
  - Small toys, crafts item, Yoyos, slime, bouncy balls & hand balls, seed packets, marbles & puzzles.
- Stage 2**
  - Jars & baskets of any size, hair accessories (clips, pins, ribbons etc), costume Jewellery, bath bombs, temporary tattoos, lego & water pistols.
- Stage 3**
  - Packaged lollies, biscuits, chocolates & any other packaged treats.

It would be great to also receive as donations across all 3 Stages re-useable drinking straws, drink bottles, food packaging wraps & containers.

All items are to be delivered to the Canteen. Raffle tickets will be sold prior to and on the night at the Christmas In The Valley. All raffles will be drawn on the night.

## Thank You!





Valley View Public School  
P&C Association



# Christmas Disco

## Wednesday 20th November

View Start, Kindy, Year 1 & Year 2 - 4:30pm - 5:30pm

Years 3, 4, 5 and 6 - 5:45pm - 7:00pm

**Tickets \$3 each or 2 for \$5**

*Includes a Glow Stick for every child!*

Sausage Sizzle & Bake Sale will also be available on the night for everyone!

**Sausage sandwich - \$2.50 each**

**Drinks (water & soft drink) - \$2 each**

**Bake Sale** - Donations of baked goods will be very much appreciated

**Tickets also available at the door on the night!**

Please return all orders to the office in a labelled and sealed envelope



### Ticket Pre-Order Form

Name: \_\_\_\_\_ Class / Stage: \_\_\_\_\_

Name: \_\_\_\_\_ Class / Stage: \_\_\_\_\_

Name: \_\_\_\_\_ Class / Stage: \_\_\_\_\_

Name: \_\_\_\_\_ Class / Stage: \_\_\_\_\_



### Entry Price Guide

**1 Child = \$3**

**2 Children = \$5**

**3 Children = \$8**

**4 Children = \$10**



## P&C NEWS

### Obstacool- Wednesday 20<sup>th</sup> November

Woo hoo!!! It's here!!! Wednesday is the day, and we are so excited. If you would like to volunteer on the day, please feel free to contact any of the P&C Executive Team members, or message our Facebook page or pop in for as long as you can on the day.

### School Disco- Wednesday 20<sup>th</sup> November

A busy week, boy will all of us sleep well this weekend. With View Start ending and this celebration being the culmination of this we would love to thank the VVPS Staff for their support for this event. Mrs Anderson in particular who has been an amazing co-ordinator. Thank you Amy, you're a superstar!!!

### Star FM Morning Broadcast- Friday 22<sup>nd</sup> November

Friday wraps up this massive week with the hilarious Rabbit and Julie Goodwin broadcasting from our school on Friday 22<sup>nd</sup> November. We will be holding a FREE bacon and egg sausage sizzle breakfast from 7:00am-8:30am or until stocks run out. Come and join the fun.

### Bakers Delight and Breakfast Club

Breakfast Club cannot run without the generous donations from Bakers Delight Wyoming. Go and visit them at Wyoming Shopping Village, their products don't disappoint. We'd love to welcome more volunteers into our fold. If you are available to help in the Breakfast Club, please see Lisa Chadwick (Vice President Standing) for more details, or email her on [vicepresidentvvpc@gmail.com](mailto:vicepresidentvvpc@gmail.com).

### Appendix 5 - Volunteer Requirement

Want to help at our Carols? If you are a close relative of a student at the school (parent, grandmother or sibling) we'd love to have your help, you will need to fill in an Appendix 5 before you can volunteer. With this form completed 3 days before you volunteer, 100 points of ID and a chat with our hard working office staff you'll be ready to volunteer for 12 months in our fabulous school.

### Uniform Shop Winter Sale Stock reduced to \$5 each - [uniformvvpc@gmail.com](mailto:uniformvvpc@gmail.com)

The Uniform Shop continues to open on Thursdays between 2:00 and 3:00. Email orders are available, as well as orders being available through the Office. Come I and grab a bargain, this sale stock won't last.

### Dates for the diary: (more to come, dates subject to change) Please see P&C Facebook page for updates

School Disco: Wednesday 20<sup>th</sup> November

Obstacool: Wednesday 20<sup>th</sup> November

Star FM Visit: Friday 22<sup>nd</sup> November

Christmas Carols: Friday 6<sup>th</sup> December

*Shannon Osmond  
2019 P&C President*





## CANTEEN NEWS

Canteen days are Wednesday, Thursday and Friday.  
Hours are 8.30am to 1:50pm.  
Orders can be placed at the canteen from 8:30am to 9:00am.



### Welcome to Week 6

Welcome to Week 6. This week is going to be great! Lots of activities and a visit from Star FM.



Tomorrow is Obstacle! Its going to be a great day. **The P & C** are selling ice blocks on the oval to purchase after the kids complete the course. We hope they enjoy! These will be \$1.00.

The canteen will still operate as **normal** tomorrow. Lunch orders, slushies and snacks will be available.

The canteen will be open Friday morning from 8.15am, this is due to Star 104.5FM visiting our school and we look forward to hearing them broadcast.

We will have fruit cups, muffins, pikelets and drinks available.



Dates for the diary - **FRIDAY 6<sup>th</sup> December / WEDNESDAY 18<sup>TH</sup> December** please let me know if you can spare anytime to help in the canteen. If you can spare an hour please that would be great.

Bec 0438283165.

*Bec van Drempt*  
Canteen Supervisor

## UNIFORM SHOP

Email: [uniformvvpc@gmail.com](mailto:uniformvvpc@gmail.com) Uniform Shop Opening Hours Thursday 2:00pm – 3:00pm



We are looking for a new Uniform Shop Coordinator, if you'd like to learn more about this position please direct your inquiries to Lisa through [vicepresidentvvpc@gmail.com](mailto:vicepresidentvvpc@gmail.com) or talk to us one-on-one at the Uniform Shop, located at the Cottage near the COLA. Please be aware that lost property is going to be sorted every 2 weeks due to hygiene concerns. Please clearly label all items your child brings to school. Lost property is located outside the Uniform Shop.



## Stay informed with the SkoolBag App



The SkoolBag app is the easiest way to stay up-to-date with school events, last minutes notices, newsletters and all school communications.



# 1

### Download the app

Search for the free SkoolBag app in the Apple App or Google Play Store

# 2

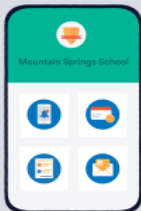
### Create an account

Sign up in seconds with your email address

# 3

### Add your school

Search for your school and add your subscription groups



SkoolBag

### Download Instructions:

#### For Apple Users

1. From your iPhone/iPad, open the Apple App Store and search for "SkoolBag".
2. Download the free SkoolBag app.
3. Open the app, add your school and you're ready to go!

#### Google/Android Users

1. From your Android device, ensure you have an account in the Google Play Store.
2. Open the Google Play Store and search for "SkoolBag".
3. Download the free SkoolBag app.
4. Open the app, add your school and you're ready to go.

*Bakers Delight*  
We're for real.  
Wyoming



To register and make bookings, visit [www.campastralia.com.au](http://www.campastralia.com.au) or Customer Care Team on 1300 105 343. The team are available 24 hours a day, 7 days a week (except National Public Holidays).

Camp Australia – Valley View Public School service phone number: **0411 298 277**

Before Care Times: 6:30am-9:00am

After Care Times: 3:00pm-6:30pm

*We look forward to caring for your children*

### Notes issued this week:

- Surf Fun Day Toowoyn Beach—Stage 3
- Sex Education Sessions—Stage 3
- Welcome to Kindergarten 2020—Kindergarten 2019
- Rumbalara Excursion Update—Stage 1
- Farewell Night Information—Year 6
- Stage 3 GATS Day Information—Stage 3

**All notes are now on the school website at [valleyview-schools.nsw.edu.au](http://valleyview-schools.nsw.edu.au) and on the App**

