



Respect, Responsibility, Personal Best

OUR G.A.'s WONDERFUL WORK AROUND OUR SCHOOL



COMING EVENTS

TERM 4

Week 11

Tuesday 14 December
Year 6 Farewell Dinner

Thursday 16 December
Last Day of Term 4

Friday 17 December
Staff Development day

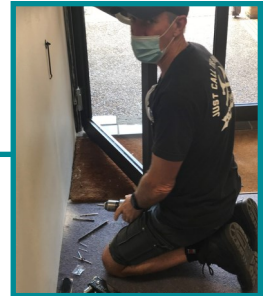
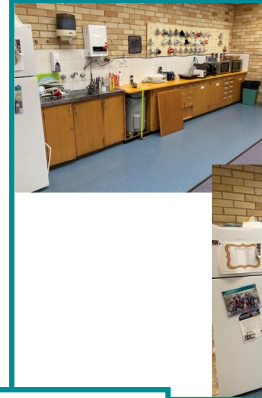


THANK YOU FOR WEARING A MASK

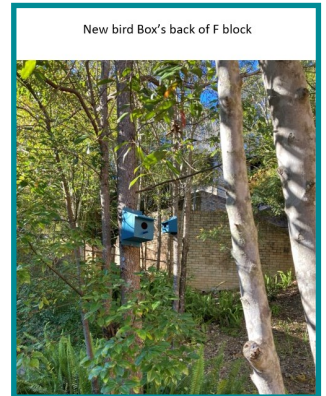


Before

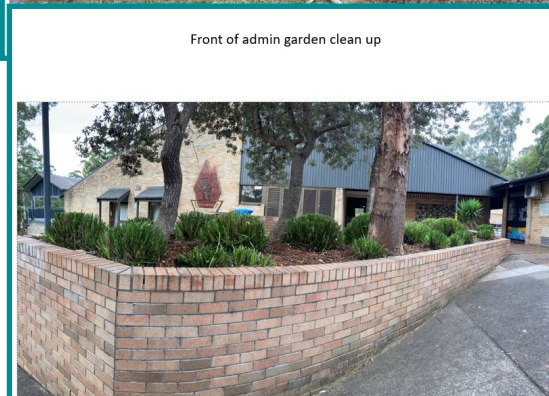
Behind F block
Bush cleared
New seats fitted and painted



New garden top side of uniform shop



New bird Box's back of F block



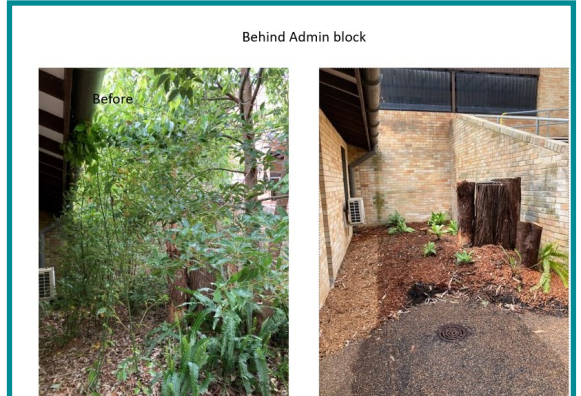
Front of admin garden clean up



Outside Admin. Staffroom



Replaced retaining wall



Behind Admin block



PRINCIPAL'S REPORT

Guidelines Update

Last week it was announced that from this week, all schools in NSW will be moved to Level 3 settings which brings us into line with updated community settings guidelines. Please follow the link below for a full list of changes. <https://education.nsw.gov.au/covid-19/advice-for-families?deliveryName=DM21627>

I have included some of the advice below:

- ◆ All students are expected to be at school unless they are unwell. Do not attend school if unwell, even with mild symptoms. Get tested for COVID-19 and follow NSW Health directions.
- ◆ If you have any COVID-19 symptoms you will be sent home and must not return to school unless you have either:
 - ◆ isolated for 10 days, when no medical certificate is available
 - ◆ a negative COVID-19 test result and are symptom free.
- ◆ In circumstances where a student has other medical reasons for recurrent symptoms, a letter from your GP is sufficient to negate the requirement for a negative test.
- ◆ Self-isolation periods and testing requirements differ for close contacts based on their exposure and vaccination status.
- ◆ A combination of layered safety measures – vaccination, wearing masks, student cohorting, physical distancing, ventilation, hygiene and cleaning - allows us to prioritise student and staff wellbeing while we keep schools operational.
- ◆ To provide a safe learning environment for students and staff, schools will be implementing a cohort model to reduce interaction between students in different groups and minimise physical interaction between students on school grounds.
- ◆ All staff on school sites must be fully vaccinated.
- ◆ All parents and carers, volunteers and providers who are permitted to come onto school sites must be fully vaccinated.
- ◆ Masks are required indoors for all staff, visitors and students in Year 7 or above, and strongly recommended indoors for primary students.
- ◆ Teaching and learning in indoor spaces will be well ventilated and as large as possible for the number of participants.
- ◆ Outdoor settings for activities and events should be prioritised wherever practical as these represent a lower risk than indoor settings.
- ◆ Where activities or events will proceed indoors, organisers will ensure the space is well ventilated and as large as possible for the number of attendees.
- ◆ Schools will continue enhanced cleaning for high-touch areas and other hard surfaces, door handles, lockers, light switches and handrails in stairways and movement areas. Enhanced cleaning is delivered as part of the daily cleaning of schools.
- ◆ Assemblies and presentations will be allowed outdoors on site. Cohorts will be separated with physical distancing in place where practicable
- ◆ Bands, ensembles, music classes and music tuition will be allowed within cohorts and only for instruments that do not rely on breath, as these pose a higher transmission risk.
- ◆ School performances, productions and concerts are not permitted.



External Validation

Every four years each public school in NSW goes through an External Validation process which involves assessing where the school lies against the Schools Excellence Framework and then meeting with a panel to look at our on-balance judgement. This is a lengthy and thorough process and I'd like to thank the executive staff, especially Ms McCabe and Mrs Anderson for the countless hours spent on our submission.

I'm pleased to say that the panel agreed with our assessment of the schools' performance. This will now lead to adjustments in our School Improvement Plan for the next 4-year cycle.

P&C

The November meeting of the P&C will be held virtually tonight from 7pm, all are welcome to attend and we'd love to see you there!

PBL Rewards Day

Today we had our PBL Rewards day. This time, instead of cashing in OK tickets we have decided to reward the whole school with a BBQ and movie for getting through a tough few months. We've been so amazed by the resilience and fortitude of our students and we wanted to say a big 'CONGRATULATIONS!'

*Kirsty Squires
Principal*

NSW Department of Education

Term 4 roadmap

From 8 November

All schools will operate on updated Level 3 settings for the rest of Term 4.

- School sports allowed
- Inter-school sports allowed outside of school hours
- Assemblies and presentations allowed outdoors on-site
- Excursions allowed outdoors
- Dancing and some music classes allowed
- Fully vaccinated visitors allowed on site to support curriculum delivery, wellbeing programs and school operations
- Community use allowed (including P&C meetings)

From Term 1 2022

We can look forward to more freedoms as schools return in 2022.

Keeping us all safe

A combination of layered safety measures allow us to prioritise student and staff wellness while we keep schools open.

Stay home if unwell

- Do not attend or participate if unwell, even with mild symptoms.



Vaccinations required

- All adults must be fully vaccinated.



Always check in

- All staff and visitors must check in when attending a school site or gathering.



Wear masks indoors

- Masks are required indoors for all staff, visitors and students in Year 7 or above, and strongly recommended indoors for primary students.
- You can take your mask off when eating or exercising.



Physically distance

- Maintain 1.5 metres physical distancing wherever practicable.



Maximise ventilation

- Activities and events should be held outdoors where practicable.
- Indoor spaces will be well ventilated and as large as possible for the number of attendees.



Stick to your cohorts

- Avoid mingling with other groups when moving around the school.



For the latest information, refer to education.nsw.gov.au/covid-19.



SCHOOL BAND

Did you know? Our school has a School Band Program! 🎵🎸

Students did a fantastic job advancing their music skills via online learning in term 3. 📺

We are incredibly proud of their achievements ❤️ and wanted to share their online learning project video in celebration of their hard work. 📺

Well done 👍 to everyone who participated and thank you 🙏 to the Central Coast Conservatorium teachers for making music so much fun! 🎵🎸 <https://youtu.be/7xDTPCbIkT4>.

Marg Suaning
Coordinator

ONLINE ENROLMENTS

The Online Enrolment System is now up and running. This system is designed to provide flexibility for our parents to submit an enrolment application online and at the time that suits you best. The application can be accessed on all browsers and mobile devices including iOS and Android.

- ◆ Enrolments both in area and out of area are now available.

The online application process is currently restricted to:

- ◆ Children who are Australian citizens, New Zealand citizens or permanent residents
- ◆ Children who live in NSW.

We offer our support and encourage you to complete your application to enrol online. If, however, you do not feel comfortable completing an application online, a paper copy will be available for collection from the front office or can be downloaded from the Department's [going to a public school site](#).

SCHOOL BANKING UPDATE FROM COMMONWEALTH BANK

Thankyou to the families involved in the Commonwealth School Banking program, below is a letter outlining the conclusion of the service offered in NSW schools and information for future banking deposits with Commonwealth. **The closure of the program for Valley View Public School is immediate, any questions please get in contact with us. Thankyou, Lauren Davis and Amy White.**

For 90 years, our School Banking program has helped children learn about money, reinforced the importance of regular savings and provided structure for parents to support their children to save. Though the program continues to have strong support from schools, parents and teachers, recent decisions by some state and territory governments because of a review by the corporate regulator mean we are unable to continue providing programs in schools, and we have had to make a difficult decision to close our School Banking program for all government and non-government schools across the country.

Our School Banking program was established in 1931 at a time when having a bank account was not commonplace, and since then we have helped more than 15 million Australians take their first financial steps. This would not have been possible without the wonderful support we have received from schools like yours, including all the parents and volunteers, and for this we are deeply grateful. Thank you.

Even though this is a sad time, School Banking has taught so many young Australians, past and present, the value of money and we believe this should be celebrated. We have created a place for you to share your stories, fondest memories and lessons learnt through the program. To share your story and access our financial education resources, please visit commbank.com.au/schoolbanking

Even though the CommBank School Banking program will not be returning to your school after this year, you can continue to make deposits into your child's Youthsaver account through online transfers or at any CommBank branch. If you need further information please phone 132 221 or visit your local CommBank branch.



School Travel for 2022



2022 school travel applications are now open

Students who need a School Opal card or travel pass for 2022 can [apply](#) now. A new application will need to be submitted if they are applying for a school travel pass for the first time, or if they are requesting an additional travel entitlement as a result of a new shared parental responsibility situation (e.g. joint custody).

Students who change address, school, campus location, or who have repeated a year or received an expiry notification from Transport for NSW for their school travel entitlement should [renew or update](#) their details before **the end of term 4**. This will ensure that schools can endorse applications and current entitlements are updated and remain valid. School Opal card holders will have the changes applied to their existing card.

If a student's distance eligibility has changed based on their grade the system will automatically update their entitlement if they meet the new criteria. If they do not meet the new [eligibility criteria](#), they will receive an expiry notification via email.

Students who have an entitlement approved under a medical condition that is due to expire will receive a notification advising them to re-apply.

[Term Bus Pass](#) holders will receive a notification to re-apply.

Students in the Opal network applying for an Opal card (including a Term Bus Pass) for the first time will receive their Student Opal card at their nominated postal address. Cards will be mailed out from January 2022.

Students living in rural and regional (R&R) areas should receive their travel pass at the start of the new school year from their nominated transport operator. It may come via the school or be sent directly to them at home. **Note:** some R&R operators do not issue travel passes. Students/parents should confirm with their nominated operator if they do not receive a pass.

School Student Transport Scheme site change

On 1 October 2021 the School Student Transport Scheme (SSTS) information and application portal was moved to transportnsw.info. This will assist families to find all their travel information in the one place.

Travel from Term 1 2022

We ask that parents plan ahead and make sure their child knows which service/s to use and has a valid ticket to travel; either a School Opal card or Child/Youth Opal card (within Greater Sydney) or a School Travel Pass (outside Greater Sydney), from the start of the school year.

Applications for the School Student Transport Scheme (SSTS) open at the start of Term 4 2021 for travel in 2022, so parents/students can [apply](#) or [update](#) details early and be ready for the start of the new school year.

Most students using the Opal network will not need a new Opal card and can continue travelling on their existing card each year.

The start of the year is a difficult period for local bus operators, and students travelling without a valid ticket make service planning and operations increasingly difficult.

We recognise that for some families last minute changes to school enrolments mean they may not have a School Opal card or Travel Pass for the start of term. In the Opal network, we strongly encourage these families to have their children travel on a Child/Youth Opal card until they receive their valid School Opal card. If outside Greater Sydney, parents should contact their [local bus operator](#) to discuss their travel needs.

Bus operators are flexible and understanding, particularly at the start of the school year, and will ensure students can travel safely to and from school. But to best support our operators we encourage all students to have a valid ticket, as early as possible, from the start of the school year.

Please also remember that students using Opal cards must tap on and tap off in line with the [Student code of conduct](#) and [Opal terms of use](#).



Further information can be found at transportnsw.info/travel-info/using-public-transport/school-travel

Enquiries can be submitted at transportnsw.info/contact-us/feedback/passes-concessions-feedback



NSW DEPARTMENT OF EDUCATION

Tell Them From Me student Survey:



Information for parents and consent form for parents and carers

Dear Parents and Carers

This term, our school is taking part in the Tell Them From Me student survey. The survey will provide us with valuable feedback on what our students think about school life, how engaged they are with school and the different ways that teachers interact with them. Schools in Australia and around the world have used the Tell Them From Me survey to help them improve. The survey is completed online and is run by an independent research company, **The Learning Bar** which specialises in school-based surveys.

Staff in schools will **not** be able to identify individual students from their responses. To ensure confidentiality, participating students will receive a unique username and password. Where fewer than five students respond to a question, the results will be suppressed. The survey typically takes 30 minutes or less to complete and will be administered by the school during normal school hours. Once the surveys are completed by students, reports are prepared and in most cases are available to schools within three business days.

This survey will help our school better understand how to improve student wellbeing and engagement. It will help the school identify what works to improve student outcomes.

Participating in the survey is entirely voluntary. Your child will not take part if either you or your child do not wish. If, during the survey, your child is uncomfortable, he/she can choose to stop the survey at any time. The majority of questions in the survey can be skipped.

If you **do not want your child to take part** in the survey, please complete the attached form and return it to the school by 11.11.21

More information about the survey and the research is available in English at education.nsw.gov.au/ttfm

Kirsty Squires
Principal

Kellie McCabe
TTFM Coordinator



Valley View Public School

Tell Them From Me Student Feedback Survey non-consent form

- ◆ If you **do not want** your child to participate in the student feedback survey, please sign this form and return it to the school by **11 November 2021**

- ◆ **I DO NOT** give consent for my child/children to participate in the **Tell Them From Me student feedback survey.**

Name of student 1	Roll class of student 1
Name of student 2	Roll class of student 2
Name of student 3	Roll class of student 3
Name of student 4	Roll class of student 4





Uniform shop

Open for business

In compliance with current COVID-19 restrictions, the Uniform Shop is open for **online orders only**.

Orders are filled weekly on Friday mornings and distributed directly to your child's classroom. Please include your child's full name and class in the notes section.

Online shop: www.valleyviewpandc.org.au/shop

www.valleyviewpandc.org.au



Valley View Public School

Kindergarten Enrolment!

for children in Kindergarten 2022



Online enrolments are open for children starting school in 2022.



To enrol - go to our school website and use the Enrolment tab at the top of the page.

Please call the school office to register your child to be kept informed of upcoming events.



Information about our View Start Program will be sent out soon.

Made with PosterMyWall.com

ROAD SAFETY MESSAGE

Keep your child safe!

Your child is still developing an understanding of danger and safety around roads. While they are often keen to do things for themselves, an adult must always be responsible in a traffic environment.

Your child is a vulnerable road user. They are still developing the skills that help them to judge the direction of sound and the speed and distance of vehicles. Your child is physically small, making it harder for drivers to see them. They may be easily distracted and tend to only be able to focus on one thing at a time. This means that they find it difficult to deal with sudden changes in the traffic environment.

Your child may be able to tell you the rules and how to keep safe near in and around vehicles, but in reality, will not always be able to apply them.

Take some time to explore and talk about the Safety Town activities online with your child – they are lots of fun!

www.safetytown.com



P&C NEWS

Hello there, we're back and we've hit the ground running! This term, the P&C has worked together with Mrs Anderson to support the school's literacy program with a **donation of \$4,200** toward new Decodable Readers for Early Stage 1 and Stage 1. We've also reopened the Uniform Shop and will operate a popup shop at View Start for Kindergarten 2022.

Our next P&C meeting will be held online via google meet on Tuesday 9th November at 7pm. You are welcome to join us via this link <https://meet.google.com/yzi-xysv-nhk?hs=224>.



Take a break with your P&C

Name: Ashishna Sharma

What's your role?

I'm a first time P&C member with a child in Kindergarten and this year I've had the opportunity to support Fleur Cuttell as Vice President (Standing).

What hobby do you secretly want to try?

Well it's no secret anymore! My husband is a scuba diver and I would love to have the courage to breathe underwater and join him on a dive...one day!

What is your favourite place in the world?

Wherever my family is and right now, that would ideally be sipping fresh coconuts on a catamaran anchored somewhere in the warm waters around the Yasawa Islands.

If you could bring back any fashion trend what would it be?

The 90's K Swiss sneakers.

Who would you like to take a break with next?

Our very friendly Bec Van Drempt.

Uniform shop

We are open for [online purchases](#). Orders are distributed every Friday directly to your child's classroom - please include your child's full name and class in the notes section.

Contact us

Email: secretaryvvp@gmail.com

Uniform shop: www.valleyviewpandc.org.au

Facebook: P&C Association for Valley View Public School



CANTEEN NEWS

Welcome to Week 6!!

A **HUGE** thank you to all the students who placed their orders at the canteen in the last few weeks. Its been great to operate in the new kitchen.

As per last newsletter – **Orders are placed in Bubble Baskets.** NO OVER THE COUNTER SERVICE.

Students can however order Slushies, Iceblocks and muffins in a `lunch order` they then will be picked up with the orders are lunch time.



Continued Changes –

- ◆ **Students will need to place their lunch orders in the BUBBLE BOXES. (from 8.30am to 9am)**
- ◆ **There will be NO breakfast club available or over the counter breakfast.**
- ◆ **The term 4 Menu will operate this term.**
- ◆ **There will be no Party Packs available for term 4.**

EXCITING NEW ADDITIONS TO THE TERM 4 MENU.

Due to popular demand we will also sell **CHILL J's** this term. With many assorted flavours – kids can also add these to their lunch orders.



SUPPLY SHORTAGE

Due to supply issues, there is **NO MONY** ice treats this term. Fruit Snaps will be given as a replacement if ordered.

Thanks for all your patience and understanding as we continue this term.

*Rebecca Van Drempt
Canteen*



CANTEEN MENU

TERM 4 2021

OCT 2021

Orders to be placed between 8.30am – 9.00am



snacks



Fruit cup	1.50
Chips (red rock sea salt)	1.30
Muffins	1.00
Garlic bread loaf	0.20
Apple	0.50

hot food



Chicken tenders	1.50
Chicken nuggets	0.80
Chicken nuggets – gluten free	0.90
Pie	3.50
Sausage roll	2.50
Extras: tomato or BBQ sauce portion	0.20
wrap or gluten free bread	1.00

burgers



Cheese burger (beef, cheese, sauce)	4.00
Plain burger (beef patty on roll)	3.50
Crumbed chicken burger (with lettuce, mayo)	4.00

PIZZAS

Cheese pizza	2.00
Ham & pineapple pizza	2.50

JAFFLES

Cheese jaffle	2.00
Ham & cheese jaffle	2.50
Baked bean jaffle	2.00

All jaffles can be made with white or wholemeal bread

sandwiches



Vegemite	1.50
Jam	1.50
Honey	1.50
Cheese	2.00
Cheese & tomato	2.50
Ham, cheese & tomato	3.00

All sandwiches can be made with white or wholemeal bread

drinks



Water small	1.00
Nippy (chocolate)	2.50
Juice cup	1.50
Orchy juice (apple & blackcurrant)	2.30
Up & Go (vanilla or chocolate)	2.50
Slushie	2.00
Milkshakes (assorted flavours)	1.50

frozen treats

Mini frozen ice cups (assorted flavours)	0.20
Quelch Fruit sticks	1.00
Mony (assorted flavours)	1.00
Snap-stix (assorted flavours)	1.00

VEGETARIAN
GLUTEN FREE
CANTEEN MADE
LOW FAT


Stay informed with the SkoolBag App



The SkoolBag app is the easiest way to stay up-to-date with school events, last minutes notices, newsletters and all school communications.

- 1 Download the app**
Search for the free SkoolBag app in the Apple App or Google Play Store
- 2 Create an account**
Sign up in seconds with your email address
- 3 Add your school**
Search for your school and add your subscription groups




SkoolBag 

Download Instructions:**For Apple Users**

1. From your iPhone/iPad, open the Apple App Store and search for “SkoolBag”.
2. Download the free SkoolBag app.
3. Open the app, add your school and you’re ready to go!

Google/Android Users

1. From your Android device, ensure you have an account in the Google Play Store.
2. Open the Google Play Store and search for “SkoolBag”.
3. Download the free SkoolBag app.
4. Open the app, add your school and you’re ready to go.

Notes issued this fortnight:

PBL Rewards Afternoon—Whole School
Year 6 Graduation Information— Year 6

All notes are now on the school website at valleyview-schools.nsw.edu.au and on the App